

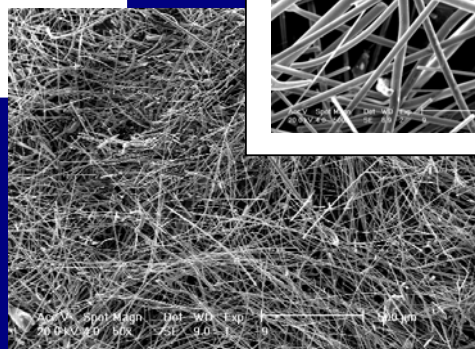
Product Data Sheet

Lapinus® PL 010-Roxul®1000

mineral fibre granulate for application in friction materials

Lapinus® PL 010-Roxul®1000 is a uncleaned granulated mineral fibre.

It is mainly used in friction materials for commercial vehicles.



Roxul®1000 chemistry = biosoluble chemistry

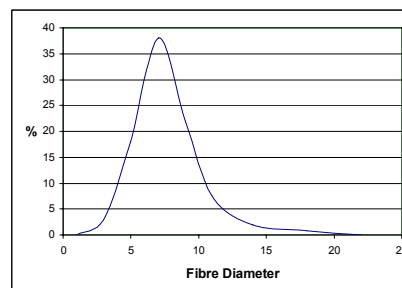
All Roxul®1000 products are worldwide exonerated from classification as a carcinogen

Chemical Analysis

	Min.	Max.
SiO ₂	38% wt	43% wt
Al ₂ O ₃	18% wt	23% wt
CaO+MgO	23% wt	28% wt
FeO	4.5% wt	8% wt
K ₂ O+Na ₂ O		4.5% wt
Others		6 wt

Parameter	Average/Tolerance	Testmethod
Fibre diameter (num. av.)	Approx. 5.5 micron	TV 165
Fibre diameter (mass wt. av.)	Approx. 9.0 micron	TV 165
Specific surface area	Approx. 0.20 m ² /g	TV 165
Hardness	6 Moh	
Hardness (Vickers)	645 N/mm ²	
Melting Point	> 1000 °C	Furnace, Visual
Ignition Loss	Max. 0.2 % wt	TV 302
Moisture Content	Max. 0.1 % wt	TV 302
Specific Density	2.75 ± 0.15 g/cm ³	
Colour	Grey/Green	Visual
Non-Fibrous Material *	<div> <div>> 63 µm</div> <div> Norm. 33.1 % wt </div> <div> Max. 38.0 % wt </div> </div>	TV 701

* Please note that the occurrence of large non-fibrous particles is inherent to the production process and these may be occasionally present in the product.



Author : E.Huynen (ADC)
Issue : December 2003 (01)

Replaces issue : -
ISO 9001 QA System : LF007.F08

"The information contained herein is based upon data considered to be accurate. However, no warranty is expressed or implied regarding the accuracy of these data, the results to be obtained from their use thereof, or any such use will not infringe upon any patent. This information is furnished only as a guide and upon the condition that the person receiving it shall make tests to determine its accuracy and suitability for his or her own purpose".



lapinus@lapinusfibres.com
www.lapinusfibres.com